

LED LINEAR LIGHT

ITEM NO.: LLS-COVE-W40 Series

INSTRUCTION OF LED LINEAR LIGHT/LLS-COVE-W40

The products are mainly used in indoor decoration lighting, especially for the application of the cove and ceiling. This series of products is divided into two kinds of working modes: steady color and dimming.

A. Specification

A-1. Structure:

Materials Of Shell: Aluminum + PC Cover
 Rotary Angle: 150°
 Input Voltage: 120V AC 240V AC 277V AC
 Protection Rating: IP20
 Operating Temperature: -20°C~40°C



LLS-COVE1 -W40-8W-120V-016

A-2. Model Configuration Table:

Model No.	Color	LED	Power	Size	Weight	✓
LLS-COVE1-W40-8W-120V-016	WWW//NW	12	8 WATTS	L300xW40xH45mm	0.35kg±5%	
LLS-COVE1-W40-8W-120V-026	WWW//NW	12	8 WATTS	L300xW40xH45mm	0.35kg±5%	
LLS-COVE2-W40-8W-120V-016	WWW//NW	12	8 WATTS	L300xW40xH51mm	0.35kg±5%	
LLS-COVE2-W40-8W-120V-026	WWW//NW	12	8 WATTS	L300xW40xH51mm	0.35kg±5%	
LLS-COVE1-W40-15W-120V-016	WWW//NW	24	15 WATTS	L600xW40xH45mm	0.75kg±5%	
LLS-COVE1-W40-15W-120V-026	WWW//NW	24	15 WATTS	L600xW40xH45mm	0.75kg±5%	
LLS-COVE2-W40-15W-120V-016	WWW//NW	24	15 WATTS	L600xW40xH51mm	0.75kg±5%	
LLS-COVE2-W40-15W-120V-026	WWW//NW	24	15 WATTS	L600xW40xH51mm	0.75kg±5%	
LLS-COVE1-W40-30W-120V-016	WWW//NW	48	30 WATTS	L1200xW40xH45mm	1.5kg±5%	
LLS-COVE1-W40-30W-120V-026	WWW//NW	48	30 WATTS	L1200xW40xH45mm	1.5kg±5%	
LLS-COVE2-W40-30W-120V-016	WWW//NW	48	30 WATTS	L1200xW40xH51mm	1.5kg±5%	
LLS-COVE2-W40-30W-120V-026	WWW//NW	48	30 WATTS	L1200xW40xH51mm	1.5kg±5%	

Note: when the arch pc cover is used, lens of 15°/25°/35°/20x40° are available.

B. Working Mode

B-1 Steady Color Mode: Power on/off.

B-2.Dimming Mode: ELV/Triac.

B-1.Mode de couleur stable: Marche/arrêt.

B-2.Mode de gradation: ELV/Triac.

LED LINEAR LIGHT

ITEM NO.: LLS-COVE-W40 Series

C. Photometric Parameters

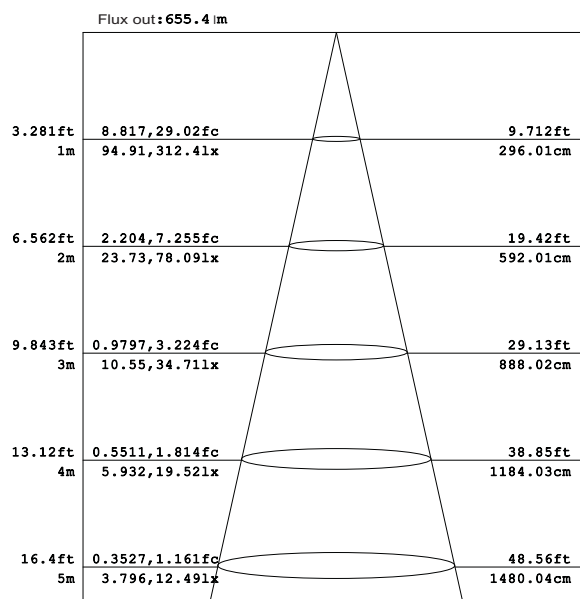
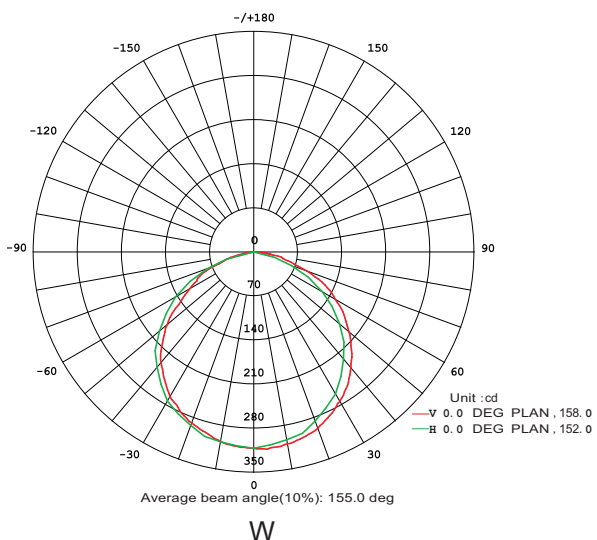
C-1. Cadela Distribution

C-1. Distribution de cadela

C-2. Illuminance At A Distance

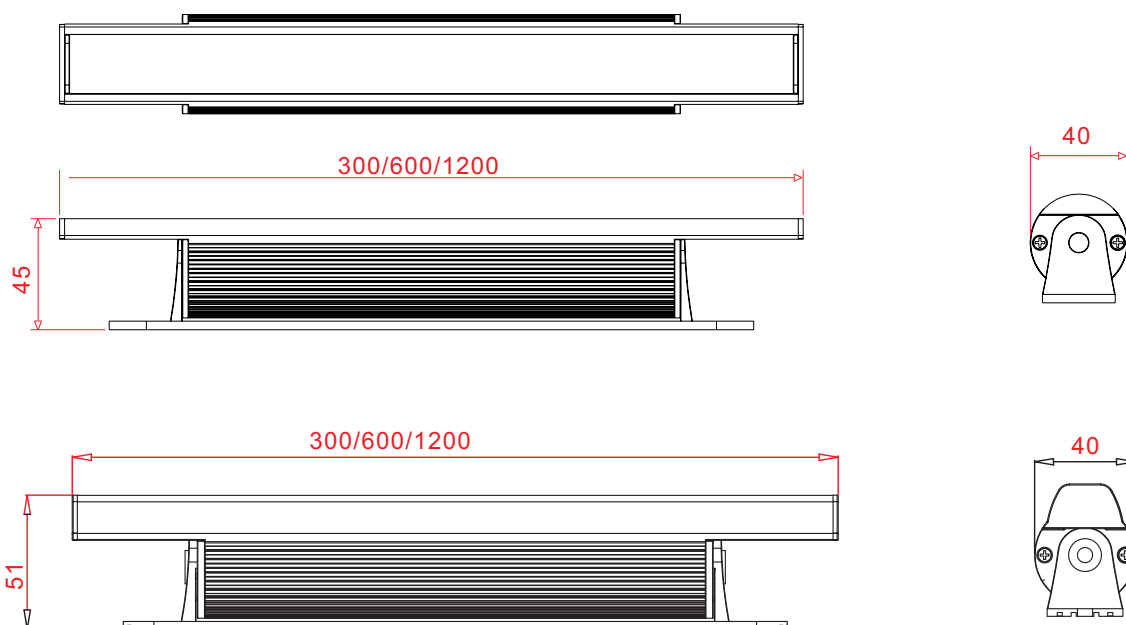
C-2. Illumination à une distance

LLS-COVE1 -W40-8W-120V-016



Note: The Curves indicate the illuminated area and the average illumination when the luminaire is at different distance.

D. Dimension Drawing (Unit:mm)



LED LINEAR LIGHT

ITEM NO.: LLS-COVE-W40 Series

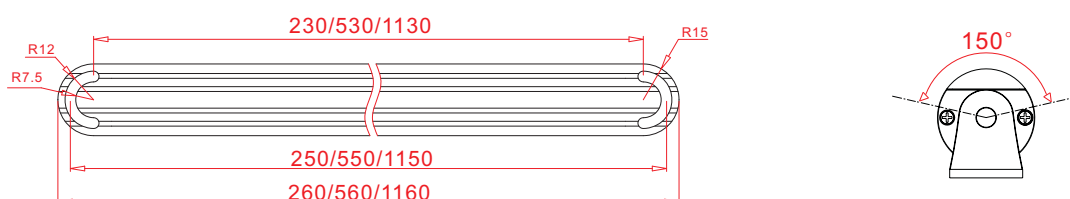
E. Installation Drawing

E-1. Use M4 screws to fix the base. The mounting size as below:

E-2. Angle adjustment: Rotating lightbody directly.

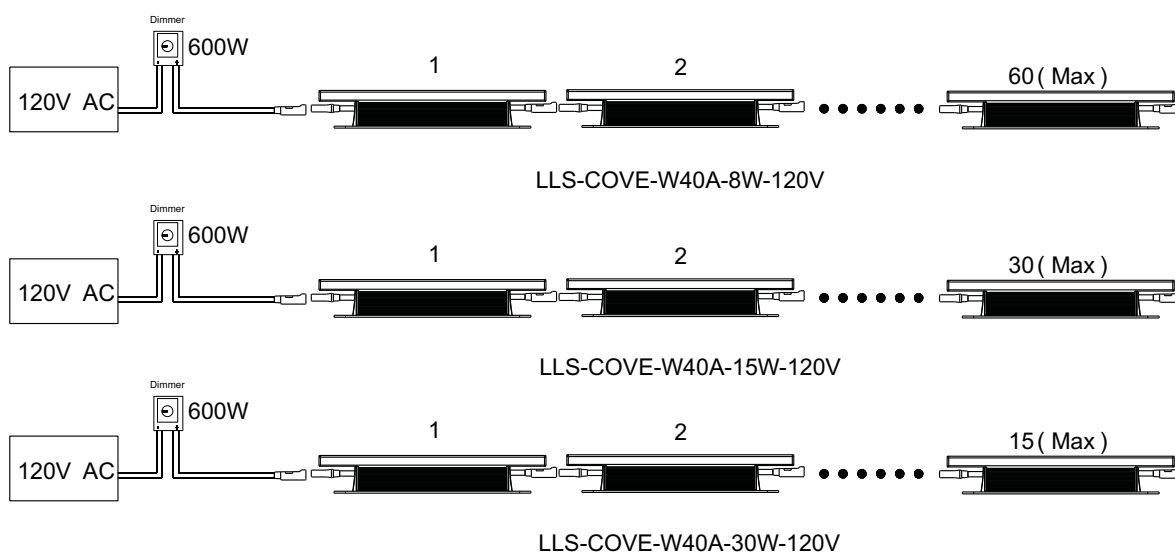
E-1. Utilisez des vis M4 pour fixer la base. La taille de montage comme ci-dessous:

E-2. Réglage de l'angle: Corps de lumière rotatif directement.



F. Connection

F-1. ELV/Traic Dimmer :



Dimmer=600W,120VAC

Model No.	Input Volt.	Connection Qty (Max)
LLS-COVE-W40A-8W-120V	120V AC	60
LLS-COVE-W40A-15W-120V	120V AC	30
LLS-COVE-W40A-30W-120V	120V AC	15

Dimmer=600W,240V/277AC

Model No.	Input Volt.	Connection Qty (Max)
LLS-COVE-W40A-8W-240V/277V AC	240/277V AC	60
LLS-COVE-W40A-15W-240V/277V AC	240/277V AC	30
LLS-COVE-W40A-30W-240V/277V AC	240/277V AC	15

LED LINEAR LIGHT

ITEM NO.: LLS-COVE-W40 Series

F. This product is suitable for dimmer selection table

	Supplier	Model No.	input voltage	dimming type	Max. rated power (W)
	Fournisseur	Modèle	Tension d'entrée	Gradation type	Puissance nominale maximale
1	Lutron	SELV-300P	120V/60HZ	ELV(TE)	300W
2		MSCELV-600M	120V/60HZ	ELV(TE)	600W
3		CTCL-153P	120V/60HZ	Triac(LE)Incan	150W
4	Leviton	AWSMG-EA	120V/60HZ	ELV(TE)	600/1150/1385W
5		AWSMG-MA	120V/60HZ	MLV(LE)Incan	600/1150/1385W
6		LEVITON SURESLIDE DIMMER	120V/60HZ	Triac(LE)Incan	600W
7	ELKO	400GLI	240V/50HZ	Triac(LE)Incan	400W
8	Leviton	AWSMG-EA	240V/50HZ	ELV(TE)	600/1150/1385W
9		AWSMG-MA	240V/50HZ	MLV(LE)Incan	600/1150/1385W
10	Lutron	NTFTU-5A-277	277V/60HZ	Triac(LE)Incan	1385W
11	Leviton	AWSMG-EA	277V/60HZ	ELV(TE)	600/1150/1385W
12		AWSMG-MA	277V/60HZ	MLV(LE)Incan	600/1150/1385W

Caution:

1. Do not plug them into power when the product is still in package;
2. Don't use anything to cover the fixture during application;
3. Don't use this product in close environment;
4. If this product appears to be damaged, do not attempt any repair, please contact your dealer.

Warning:

- * The products are only for indoor use !!!
- * Please ensure the ground connection, so as to avoid the electric shock.
- * Application in close environment is prohibited.

Caution:

1. Ne pas les brancher au pouvoir lorsque le produit est toujours en emballage;
2. Ne pas utiliser quoi que ce soit pour couvrir l'appareil lors de l'application;
3. Ne pas utiliser ce produit en étroite environnement;
4. Si ce produit semble endommagé, n'essayez pas toute réparation, s'il vous plaît contactez votre revendeur.

Warning:

- * Les produits sont uniquement pour un usage intérieur !!!
- * S'il vous plaît assurer la connexion au sol, afin de éviter le choc électrique.
- * L'application dans un environnement proche est interdite.

Note: The above instruction are subject to update or improved without notice. Pls turn to our staff for further details !
Thanks for your long term support !

Note: L'instruction ci-dessus est sujette à mise à jour ou améliorée sans préavis. Pls se tourner vers notre personnel pour plus de détails !

Merci pour votre soutien à long terme !



Do not install the lamp in the lightning activity area.

N'installez pas la lampe dans la zone d'activité de l'éclairage.